



a time and place...
for everything

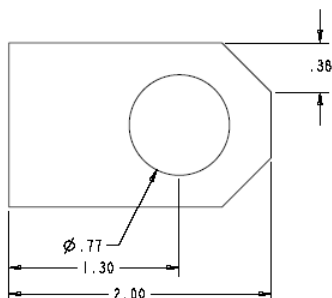
Wi-Sys Communications

WS397X/WS501X Series Mast Bracket

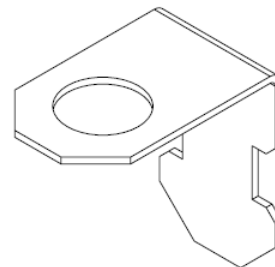
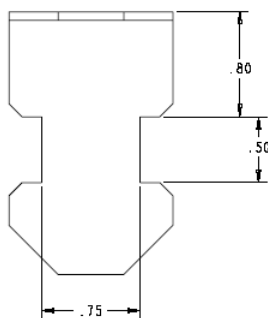
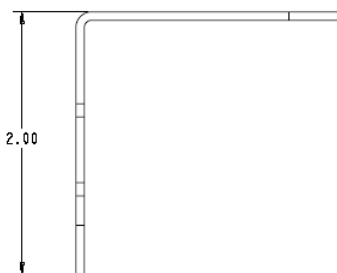
The WS397X/WS501X Mast Bracket accessory was specifically designed for mounting the WS397X Hard-mount GPS Antenna series and the WS501X GPS Antenna/Receiver Engine series to the end of a mast using a hose clamp.



Dimensions



1. UNLESS OTHERWISE SPECIFIED, ALL DIMENSIONS ARE IN INCHES.
TOLERANCES:
2 DECIMAL PLACES ± 0.02
3 DECIMAL PLACES ± 0.005
ANGLES $\pm 1^\circ$
2. TO CONVERT INCHES TO MILLIMETRES USE 1 INCH = 25.40 MILLIMETRES.
3. MATERIAL: ALUMINIUM 5052-H32 SHEET
.064 THICK
4. FINISH: CLEAR IRIDITE
5. UNLESS OTHERWISE SPECIFIED, ALL INSIDE BEND RADII TO BE 0.06 MAXIMUM.
6. UNLESS OTHERWISE SPECIFIED, ALL ANGLES TO BE 90° .
7. REMOVE ALL BURRS AND SHARP EDGES.



Wi-Sys Communications Inc.

31B Richardson Side Road
Ottawa, ON K2K 0A1 Canada
Tel 613.254.7386 Fax 613.254.7388
sales@wi-sys.com www.wi-sys.com

